



---

## INNOVATIVE GREEN WALLS

---



The  
**FRENCHAMS**  
GROUP  
PROFESSIONAL INDOOR PLANT SERVICES

*Plants at work!*

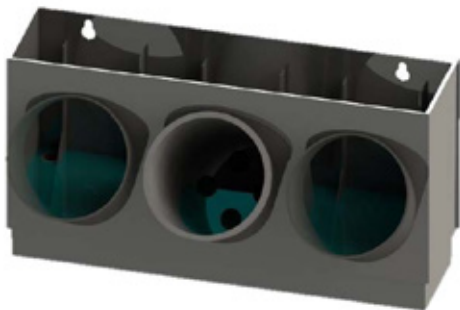


## MODULAR GREEN WALL SYSTEM



## MODULAR GREEN WALL

- Australian designed & manufactured
- No plumbing or drainage required
- Retrofittable design
- Modular & flexible
- Low water use
- Acoustic dampener
- Boosts employee morale
- Improves office air quality
- Create visually inviting spaces



### Technical Specifications

- Modular Units
- 400mmW x 220mmH x 180mmD
- 3 x 120mm Dia Pots
- Inbuilt self watering reservoir

### Construction Notes

- First row = 220mmH
- Second + row = 198mmH
- Pre-drilled 12mm laminate backboard Standard Wall Sizes
  - 400mmW x 2400mmH
  - 800mmW x 2400mmH
- Additional Sizes available

### Maintenance Replacement

- Green Wall per 1m<sup>2</sup> approx
- Includes:
  - Maintenance of the plants
  - Replacement of any deteriorating plants\*

### Installation

- Green Wall per 1m<sup>2</sup> approx
- Includes:
  - Backing Board
  - 12 x Modular units
  - 36 x 115mm Plants
  - Installation\*

\* Installation is subject to site inspection and consultation between Frenchams and the client

^ Minimum charge of \$200.00+gst per site is applicable

+ Please refer to Frenchams T&C to see limitations of replacement program

## FRENCHAMS MODULAR GREEN WALL



SCALABLE



LOW MAINTENANCE



COST EFFECTIVE

### Design and flexibility

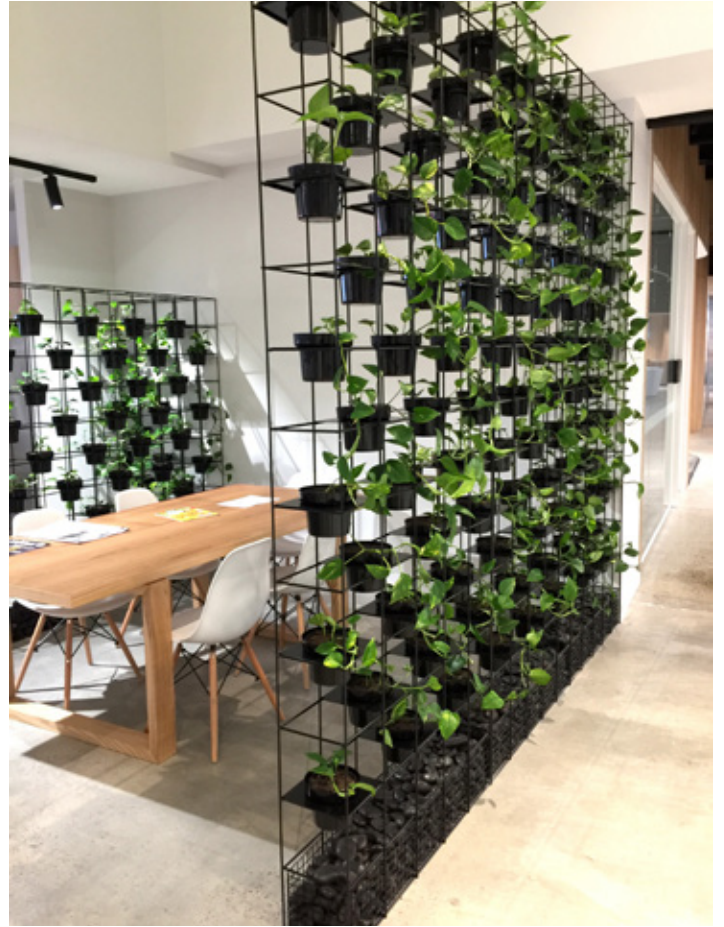
- Do you need a wall to fit your space?
- Do you need to frame a TV or Window?
- Do you have limited Space?
- Do you want to create a living artwork?

The Modular Green Wall is flexible to meet your needs be it a 800mmL x 800mmH panel or 8000mmL x 1200mmH wall we can supply install and maintain for a fraction of the cost of some other green wall solutions. No plumbing or drainage required and retrofittable to most standard walls.





## GRID FRAME GREEN WALL







## Technical Specifications

- Frames available in 2 height sizes
- 970mmW x 210mmD x 1935mmH
- or 970mmW x 210mmD x 2670mmH
- Frames available in Black or White
- Green Wall Pots available in Black, White or Terracotta colour

## Construction Notes

- Frames include a removable 60kg pebble gabion tray for stability
- 1935mm high frame includes 20 green wall pots
- 2670mm high frame includes 30 green wall pots
- Frames can be cut to height to suite requirements

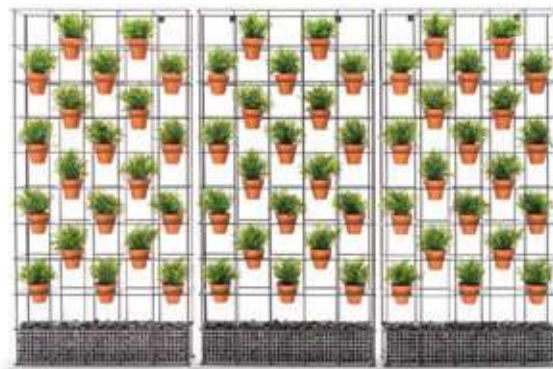
## Maintenance Replacement

Includes:

- Maintenance of plants
- Replacement of deteriorating plants

## Installation

- Frames supplied pre-assembled
- Free standing frames must be secured  
Anchor points at rear and base of each unit



## FRENCHAMS GRID FRAME GREEN WALL



SCALABLE



COST EFFECTIVE

- Do you need to create a wall?
- Do you need to divide or define a space?
- Do you need to add a privacy screen?
- Do you need a feature green wall?

The Grid Frame is a great solution to divide a space, create a room or as a feature on a boring wall.

Available in two standard heights with fixing points in the rear and base of the frame.

These frames come with a pebble gabion that not only a visually appealing aspect but is added stability to the units.

- Adding flexibility to an office space, the Grid Frame Green Wall is a relocatable wall.
- Create a wall divider, screen or feature.
- Can be added to any new or existing fitout

With frames available in Black or White and pots in Black, White or Terracotta colours there are many combinations available to suite any décor.

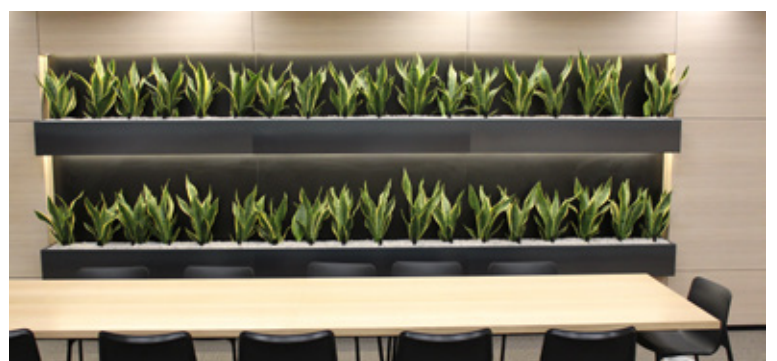
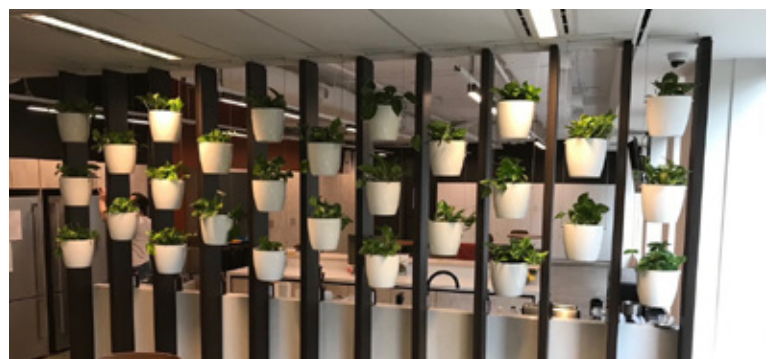
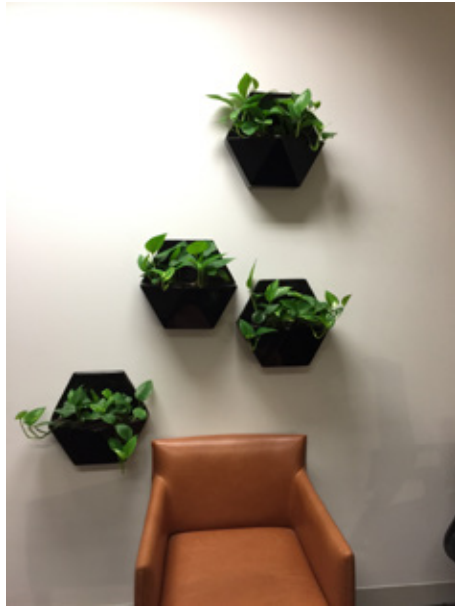
Frenchams Green Wall Pots are also suited to other green wall systems such as Schiavello's.

The image shows a modern office space with a prominent green wall. The wall is composed of large, light-colored geometric panels (squares and triangles) separated by dark lines. Several black planters are mounted on the wall, each containing a lush green plant. In the foreground, two brown upholstered chairs with black legs are positioned on either side of a small, round, black metal side table. The floor is a light-colored, textured material. The overall aesthetic is clean, modern, and biophilic.

## SOME OTHER GREEN WALL IDEAS.

Frenchams can assist with the planning and design of a green wall system for your office. Many of our planters can be incorporated into joinery to create a bespoke green wall suited to your office.









#### VICTORIA

Phone: (03) 9887 4755

Email: [vic-sales@frenchams.com.au](mailto:vic-sales@frenchams.com.au)

#### NEW SOUTH WALES

Phone: (02) 9737 0818

Email: [nsw-office@frenchams.com.au](mailto:nsw-office@frenchams.com.au)

#### QUEENSLAND

Phone: (07) 3396 2363

Email: [qld-office@frenchams.com.au](mailto:qld-office@frenchams.com.au)

#### WESTERN AUSTRALIA

Phone: (08) 9248 9342

Email: [wa-office@frenchams.com.au](mailto:wa-office@frenchams.com.au)

[frenchams.com.au](http://frenchams.com.au)