



WALL/HANGING PLANTERS



The
FRENCHAMS
GROUP
PROFESSIONAL INDOOR PLANT SERVICES

Plants at work!

WALL/HANGING PLANTERS

Frenchams have a range of planter options to decorate a blank wall, create a hanging garden or even screen an area. Below is a summary of these various options and a guide to sizing.

Wall/Hanging Planters

Honeycomb Wall Planter

320h x 345w x 150d (mm)

Available Colours



Half Moon Hanging Bowl

200h x 300d/320d (mm)

Available Colours



*Check with your local Frenchams office for sizing



Wall/Hanging Planters

Green Wall Frame

Available in 2 heights

1935h x 970w x 210d (mm) Holds 20 plants

2670h x 970w x 210d (mm) Holds 30 plants

Frames available in



Pots available in



Frame purchase required for plant hire and maintenance.



Modular Green Wall

First Row Units 220h x 400w x 180d (mm) - Holds 3 plants

Subsequent Row Units 198h x 400w x 180d (mm)

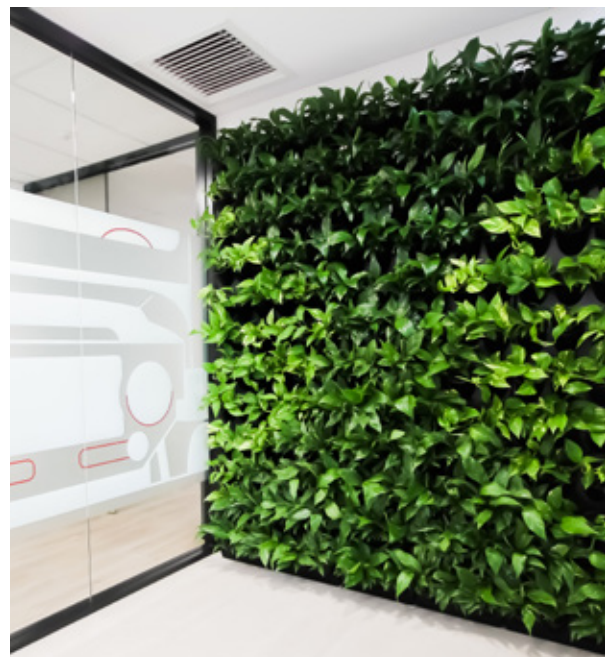
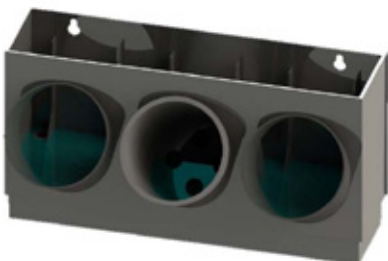
Units interlock to required size.

Recessed Unit 198h x 400w x 180d (mm)

Available in



Modular Green Wall purchase required for plant hire and maintenance.





VICTORIA

Phone: (03) 9887 4755
Email: vic-sales@frenchams.com.au

NEW SOUTH WALES

Phone: (02) 9737 0818
Email: nsw-office@frenchams.com.au

QUEENSLAND

Phone: (07) 3396 2363
Email: qld-office@frenchams.com.au

WESTERN AUSTRALIA

Phone: (08) 9248 9342
Email: wa-office@frenchams.com.au

frenchams.com.au